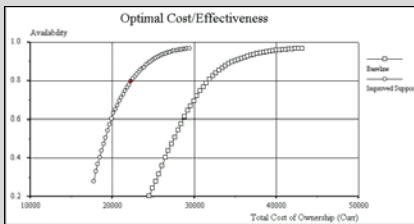


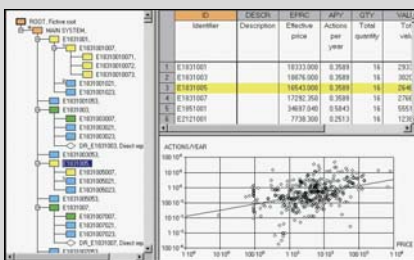
OPUS10™

The Leading Logistics Support and Spares Optimisation tool



Cost/Effectiveness curves

Each point represents the optimal support solution for a given budget or targeted availability.



Systems Analyzer

Graphical analysis of breakdown structure and items demand flow. Easy identification of cost drivers

ID	DESCRIPTION	TIME	QTY	SPARE	UNIT	UNIT	UNIT	UNIT	UNIT	UNIT
1	ITEM1	1	1	1	1	1	1	1	1	1
2	ITEM2	1	1	1	1	1	1	1	1	1
3	ITEM3	1	1	1	1	1	1	1	1	1
4	ITEM4	1	1	1	1	1	1	1	1	1
5	ITEM5	1	1	1	1	1	1	1	1	1
6	ITEM6	1	1	1	1	1	1	1	1	1
7	ITEM7	1	1	1	1	1	1	1	1	1
8	ITEM8	1	1	1	1	1	1	1	1	1
9	ITEM9	1	1	1	1	1	1	1	1	1
10	ITEM10	1	1	1	1	1	1	1	1	1
11	ITEM11	1	1	1	1	1	1	1	1	1
12	ITEM12	1	1	1	1	1	1	1	1	1
13	ITEM13	1	1	1	1	1	1	1	1	1
14	ITEM14	1	1	1	1	1	1	1	1	1
15	ITEM15	1	1	1	1	1	1	1	1	1
16	ITEM16	1	1	1	1	1	1	1	1	1
17	ITEM17	1	1	1	1	1	1	1	1	1
18	ITEM18	1	1	1	1	1	1	1	1	1
19	ITEM19	1	1	1	1	1	1	1	1	1
20	ITEM20	1	1	1	1	1	1	1	1	1

Spares Allocation Report

The reports are designed for direct presentation in documents or export to a database.

Overview

- OPUS10 is the acknowledged leading tool for Cost Effective Spares Optimization.
- OPUS10 is used world wide, for calculating optimal spares allocation and for designing Logistic Support Solutions that ensure Availability Performance at the lowest cost.
- OPUS10 is a fast and powerful tool used by suppliers, buyers and service organizations alike at any stage of a product life cycle.
- Since 1970, OPUS10 has been under continuous development driven by experiences from thousands of applications.

Features & Benefits

- Most OPUS10 customers report saving 20-40% of maintenance costs combined with increased availability.
- Not much data is required to start modeling, yet a model can be expanded to describe complex systems and support organizations in great detail.
- Extremely fast calculations, even for cases with high demand flows and a large number of items.
- Intuitive user interface that is easy to learn and fast to navigate.
- Optimized Repair Location Analysis with LORA XT.
- Powerful and flexible report generator.
- Efficient data entering and data transfer from other applications.
- Flexible Supply with Lateral Resupply & Backorder Priority.

Applications

OPUS10 is used throughout a Product Life Cycle.

...in early logistics studies

- for calculating Life Support Costs (LSC)
- to identify cost effective design solutions
- to analyze initial support concepts

...in the spares tendering phase,

- to evaluate different proposals
- to determine optimal initial assortment and allocation of spares
- for sustainability or endurance calculations

...in the operational phase

- for optimal replenishment procurements (and stock reductions)
- for reallocation of existing stock
- for proactive analysis of logistics improvements

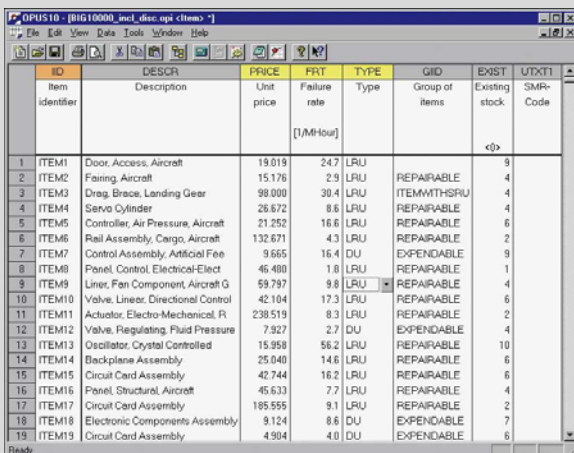
...for any kind of technical system

- Fighter jets & Airlines
- High Speed & Metro Trains
- Tankers & Submarines
- Hydro & Nuclear Powerplants
- Tanks & Trucks
- Electrical & Turbine Engines
- Mobile & Stationary Radar
- Radio Links & Base Stations

Technical Specification

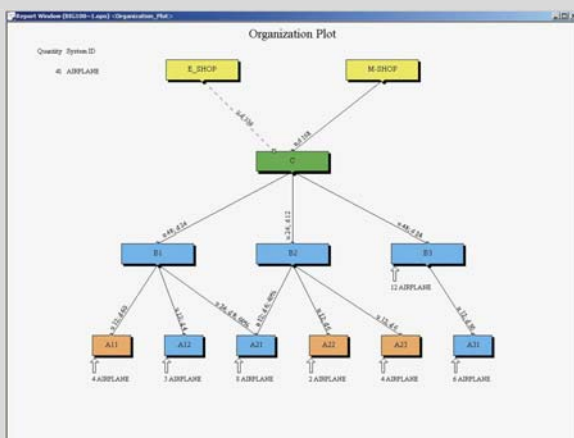
- Repairable, non-repairable and partly repairable items
- Lateral Support, System Variants, Autonomous Missions and Endurance
- Global or Item specific support organization
- Automatic identification of significance organization
- Preventive maintenance at system and item level
- No symmetry restrictions
- Unlimited number of system and item breakdown levels
- Compatible with Microsoft Windows 95, 98, ME, NT, 2000 & XP
- Pentium3 with a minimum of 128Mb recommended but runs on most platforms
- Sample calculation time for 10,000 independent variables less than 5 sec*
- ODBC compatible for easy interface with MS Excel, MS Access, Oracle, etc.
- Direct interface to Logistics Simulation tool SIMLO

*1GHz, 512Mb RAM



ID	DESCR	PRICE	PRT	TYPE	GID	EXIST	UTXTI
Item Identifier	Description	Unit price	Failure rate [1/M/Hour]	Type	Group of Items	Existing stock	SMR-Code
1	ITEM1 Door, Access, Aircraft	19.019	247	LRU		8	
2	ITEM2 Faring, Aircraft	15.176	2.9	LRU	REPAIRABLE	4	
3	ITEM3 Drag, Brace, Landing Gear	99.000	30.4	LRU	ITEMWITHSRU	4	
4	ITEM4 Servo Cylinder	26.672	8.6	LRU	REPAIRABLE	4	
5	ITEM5 Controller, Air Pressure, Aircraft	21.252	16.6	LRU	REPAIRABLE	6	
6	ITEM6 Rail Assembly, Cargo, Aircraft	132.671	4.3	LRU	REPAIRABLE	2	
7	ITEM7 Control Assembly, Artificial Fee	9.665	16.4	DU	EXPENDABLE	9	
8	ITEM8 Panel, Control, Electrical-Elect	46.480	1.8	LRU	REPAIRABLE	1	
9	ITEM9 Liner, Fan Component, Aircraft G	59.797	9.8	LRU	REPAIRABLE	4	
10	ITEM10 Valve, Linear, Directional Control	42.104	17.3	LRU	REPAIRABLE	6	
11	ITEM11 Actuator, Electro-Mechanical, R	238.519	8.3	LRU	REPAIRABLE	2	
12	ITEM12 Valve, Regulating, Fluid Pressure	7.927	2.7	DU	EXPENDABLE	4	
13	ITEM13 Oscillator, Crystal Controlled	15.958	56.2	LRU	REPAIRABLE	10	
14	ITEM14 Backplane Assembly	25.940	14.6	LRU	REPAIRABLE	6	
15	ITEM15 Circuit Card Assembly	42.744	16.2	LRU	REPAIRABLE	6	
16	ITEM16 Panel, Structural, Aircraft	45.633	7.7	LRU	REPAIRABLE	4	
17	ITEM17 Circuit Card Assembly	195.555	9.1	LRU	REPAIRABLE	2	
18	ITEM18 Electronic Components Assembly	9.124	8.6	DU	EXPENDABLE	7	
19	ITEM19 Circuit Card Assembly	4.904	4.0	DU	EXPENDABLE	6	

Input forms for fast and easy data entry and overview, combining the advantages of spreadsheets and databases



Effectiveness and Costs

OPUS10 is the ideal tool for analyzing how different factors affect technical systems' total life cycle support costs (LSC)

LSC calculations include cost elements such as:

- Investment in spares
- Investment in maintenance resources
- Transport and storage cost
- Spares consumption and procurement
- Man-hour costs for repairs and removals.
- Workshop repair costs

OPUS10 computes a number of values that measure the ability of the support organization to fulfill its purpose, i.e. to ensure satisfactory system availability performance. Examples of such measures of effectiveness are:

- Average Number of Backorders
- Mean Waiting Time for Spares
- Mean Down Time for the Systems
- Average Operational Systems Availability
- Number of System Operational Ready
- Risk of Shortage of Spares
- Probability of No Backorders

New Functionality

The latest additions to OPUS10 include Lateral Support, Preventive Maintenance, Autonomous Missions as well as LORA XT for optimizing the Location of Repair.

Furthermore, OPUS10 has a direct interface to the discrete event Monte Carlo simulation software SIMLOX that e.g. simulates how overall performance varies over time.

Services, Support and Upgrades

- Regular Training Courses for beginners as well as for advanced users
- Consulting services by experienced logisticians and developers

For customers with Upgrade and Support Agreement:

- Outstanding Technical and Modeling Support
- Free Regular Upgrades
- User Group Meetings and Seminars
- Annual visits